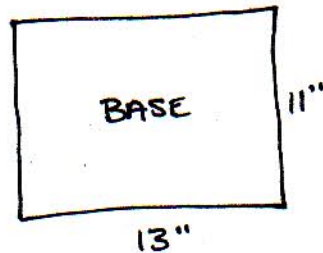
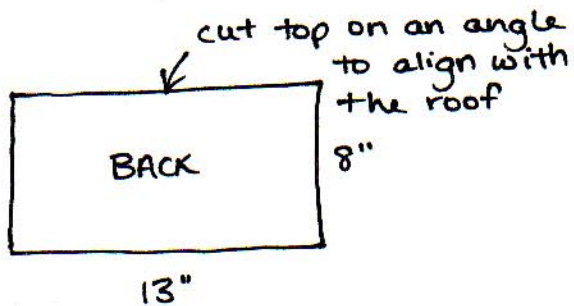
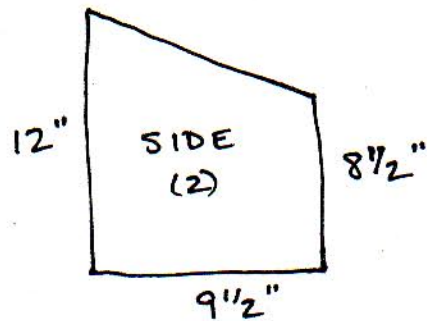
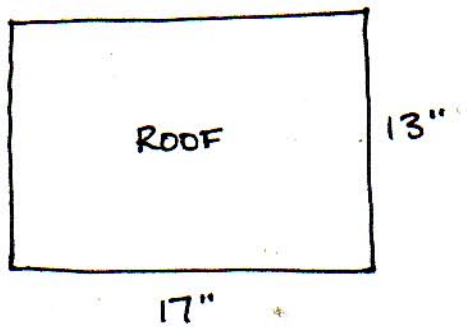


BIRD FEEDER

Home on 129 Acres



+ CURB 11" (1/2 round, doorstep, etc.)

- Use 1/2" or 5/8" plywood.
- Back & base go inside the sides
- Roof has approximately 1 1/2" overhang on all sides.
- Base sticks out the front to provide a landing platform for the birds.
- Centre ~~curb~~ curb within the main opening, leaving a small gap on either end (curb helps to keep the birds from kicking the seed out of the feeder).
- If desired, add dowels to the front of the base to provide a perch for the birds.